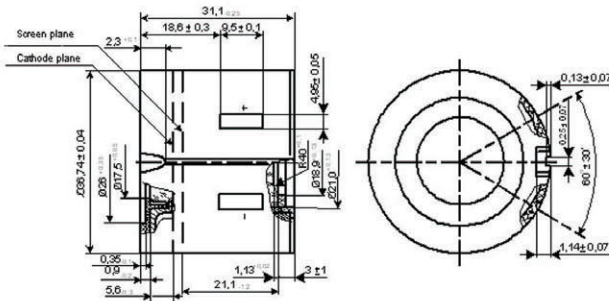


Small Generation 2+ / 3 image intensifier series with direct image transfer.

These tubes have a microchannel plate, a multi-alkali metal (Gen. 2+) or GaAs (Gen. 3) cathode, a yellow-green color screen, and a built-in power supply. Input window is made of flat surface glass; output window is made of a concave 180° rotation fiber-optical element.

This type of tubes complies with all relevant military standards and specifications.



'Slim' ANVIS inverting tube is compatible with AN/PVS 6, 9, 14 and many other devices

SPECIFICATIONS

	NC063631IC	NCXT3631IC	N3063631IC	N3XT3631IC
Grade	HD	XT	HD	XT
Photocathode operating diameter, mm	18	18	18	18
Photocathode material	S-25	S-25	GaAs	GaAs
Resolution, lp/mm	51-54	57-64	45-57	57-64
Photocathode sensitivity, $\mu\text{A}/\text{lm}$	500-600	600-750	1,200-2,100	1,500-2,100
Light gain, minimum	25,000	25,000	25,000	25,000
Image magnification	1	1	1	1
Dark background brightness, max, cd/m^2	1.5×10^{-3}	1.5×10^{-3}	0.5×10^{-3}	1.5×10^{-3}
Signal-to-noise ratio	16-20	18-22	18-24	20-24
Current consumption, max, mA	16	16	25	25
Voltage, V	2.8 ± 0.8	2.8 ± 0.8	2.8 ± 0.8	2.8 ± 0.8
Weight, g	80	80	80	80
Mean time before failure, hours	10,000	15,000	10,000	10,000
Storage time, years	15	15	15	15

Environmental resistance

Sinusoidal vibration (vibration strength):	
Frequency range, Hz	1-500
Acceleration, m/s^2 (g)	50 (5)
Mechanical shocks:	
Shock, m/s^2 (g)	5,000 (500)
Operating temperature range, °C	-50 ... +55

Modulation transfer function

Frequency, lp/mm	HD grade	XT grade
2.5	0.89	0.88
7.5	0.68	0.72
15.0	0.40	0.50

Field of view cleanness

Zone Number	Circular zone Dimensions, mm	Maximum diameter of defects			Accepted total area of defects, mm^2
		Neglected	Accepted		
			Diameter, mm	Quantity	
1	0 - 9.0	0.06	0.12	1	0.10
2	9.0 - 14.5	0.08	0.18	1	0.20
3	14.5 - 18.0	0.10	0.20	2	0.35